



2005 Fountaine Pajot Cumberland

Boat Type: Other

Address: Punta Gorda, FL, US

Price: \$499,000



OVERVIEW

This is a rare opportunity to purchase a 44 Fountaine Pajot Cumberland Powercat in the USA.

This Cumberland shows very well, she has been lift kept in brackish water in Punta Gorda and she is ready to cruise.

44 Fountaine Pajot Cumberland 2005 Owner Version 3 Stateroom and 3 Head Layout Beautiful Wood Flooring throughout the Salon Large Salon with a Dinette to Starboard Well Appointed Galley to Port Lower Helm Seat and Companions Seating Forward Upper and Lower Helms Teak Cockpit Sole Sat TV

Call today to set up your personal showing.

SPECIFICATIONS

Basic Information

Manufacturer:	Fountaine Pajot	Vessel Name:	
Model:	Cumberland	Boat Type:	Other
Year:	2005	Hull Material:	Fiberglass
Category:	Power	Hull Type:	
Condition:	Used	Hull Color:	
Location:	Punta Gorda, FL, US	Designer:	
Available for sale in U.S. waters:	Yes	Flag of Registry:	

Dimensions & Weight

Length:	44 ft - 13.41 meter	Draft - max:	-
LOA:	-	Bridge Clearance:	-
Beam:	21 ft 5 in - 6.53 meter	Dry Weight:	-

Engine

Make:	Cummins	Engine Type:	Inboard
Model:		Drive Type:	
Engine(s):	2	Fuel Type:	Diesel
Hours:	550	Horsepower:	320 (Individual), 640 (combined)
Cruise Speed:	-	Max Speed:	-
Range:	-	Joystick Control:	No

Tank Capacities

Fuel Tank:	210 gallons - 2 tank(s)	Holding Tank:	-
Fresh Water Tank:	158 gallons - 1 tank(s)		

Accommodations

Total Cabins:	3	Crew Cabins:	1
Total Berths:	-	Crew Berths:	1
Total Sleeps:	1	Crew Sleeps:	1
Total Heads:	3	Crew Heads:	1
Captains Cabin:	No		

DESCRIPTIONS

Deck Equipment and Bridge

Large cockpit with lots of seating Cockpit top Teak sole with cover Stairway to bridge Rear bench with storage below Large sliding doorway to cabin Wet bar w/ faucet Icebox Locker in stairwell

Bridge

Sliding hatch accesses bridge Helm Station U-shaped sitting area with table to Starboard Double seat at table Countertop w/ storage below Forward companions bench seating Large aft bridge area

Bridge Electronics

Raymarine Tridata Rayarine ST60 Autohelm Furuno Navpilot VHF Hailer Electronics controls

Salon

Salon accessible via a sliding door

Panoramic view through peripheral picture windows + 2 side picture windows

Wooden blinds on side picture windows and curtain on cockpit entrance door U - Dinette located to starboard with wood grain table

Galley located to port side Wood grain flooring Lower helm forward Master Suite to Port and Guest Suites to Starboard

Galley

U-shaped galley

Molded high low countertops

Lots of counter top space

2 x stainless steel sinks

1 garbage can

Hot and cold pressurized water Custom faucet

4 Burner Cooktop

Stainless Oven

2 x 130 l / 12V refrigerators

Hidden full size refrigerator

LED lighting

Overhead storage Clean Dish Drying Basin **Lower Helm**

Double helm seat

Companions seat to port TV over companions seat Workstation to starboard Bose sound system below workstation

Lower Helm Equipment

Furuno GPS / Radar Raymarine Tridata Standard Horizon VHF Cummins ignition switches Switch panel Bilge pump switch Full

Instertmentation Xantrex system control panel Xantrex battery monitor Winshield washer switch A/C control PC Plug Electronic

controls Horn switch **Master Stateroom**

Big double bed with access from either side (island bed) and slatted bed base

Large storage space below berth

Closet includes hanging space and shelves

Large porthole with blind

Curtain on deck hatch

Curtains on non-opening picture window and porthole

2 bedside reading lights

Settee Flat screen TV Fan

In suite Head

Large shower Wood slate in shower Wood grain countertops Vanity Molded countertops Overhead hatch Below counter storage

Private door Wood grain floors **Additional Units Included**

Guest Aft Stateroom

Aft stateroom located to starboard Large double berth Wood grain cabinetry with wood accents Hanging locker Overhead TV

Overhead hatch A/C control Woodgrain floors

In Suite Head

Molded countertop

Vanity

Pullout faucet shower

Toilet

Portlight

Forward Guest Stateroom

Located to Starboard Forward V-Berth Overhead TV Woodgrain cabinetry Overhead hatch

In-suite Head

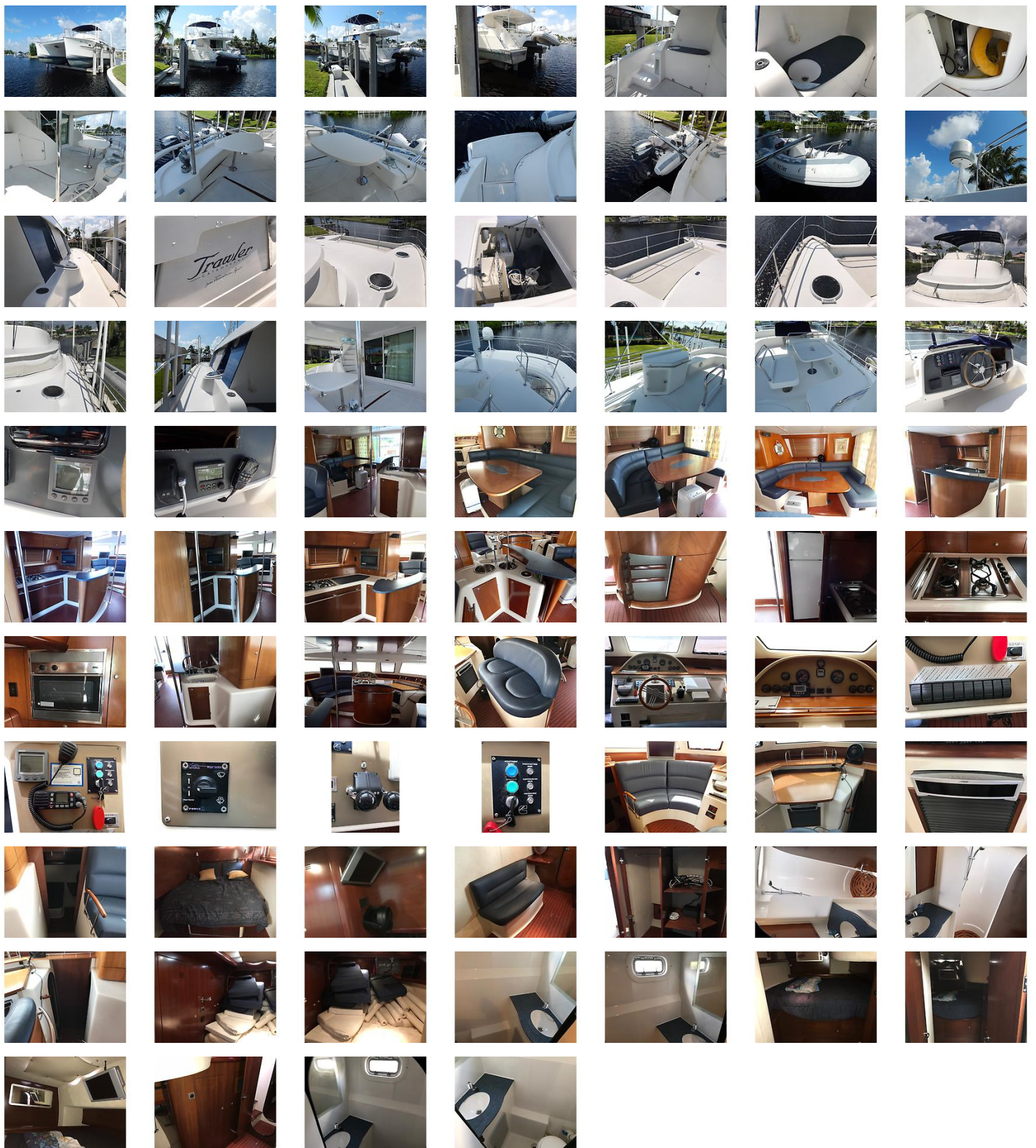
Molded countertop Vanity Pullout faucet shower Toilet Portlight

Mechanical and Electrical

320hp Cummins motors with 550 hours Electronics controls

Northern Lights generator with 900 hours 12v / 120v systems Shorepower

GALLERY



LOCATION MAP





**All
Captains
Yacht Sales**

WAYNE JOHNSON
All Captains Yacht Sales
1015 Riverside Dr. Ste 102
Palmetto, FL, US
Office: 941-773-3513
Mobile: 941-773-3513
Captwaynej@gmail.com

